



CONFIGURATION GUIDE

EMC ISILON QUICK START GUIDE

Table of Contents

- 1 Introduction 3
- 2 Requirements and Prerequisites 3
 - 2.1 Basic System Requirements..... 3
 - 2.2 Supported Servers for Auditing..... 4
 - 2.3 Supported Protocols 4
- 3 EMC Isilon..... 4
 - 3.1 Prerequisites to Audit EMC Isilon 4
 - 3.2 Required User Rights 4
 - 3.2.1 Service Rights 4
 - 3.2.2 Local System Rights..... 4
 - 3.3 Add EMC Isilon..... 5
 - 3.4 Editing the EMC Isilon Credentials 11
- 4 Support..... 13
- 5 Trademarks..... 13

1 Introduction

The Lepide Data Security Platform provides a comprehensive way to provide visibility across Active Directory, Group Policy, Exchange on-premises, M365, SharePoint, SQL Server, Windows File Server, NetApp Filer, EMC Isilon and every platform which can provide an integration with Syslogs and RestAPI.

This guide takes you through the process of standard configuration of the Lepide Data Security Platform for EMC Isilon.

If you have any questions at any point in the process, you can contact our Support Team. The contact details are listed at the end of this document.

2 Requirements and Prerequisites

Before you start installing the Lepide Data Security Platform for File Server, make sure that your computer meets the following requirements:

2.1 Basic System Requirements

- Required Processor
 - Minimum dual-core processor
 - Recommended quad-core processor
- Required RAM
 - Minimum 4 GB RAM
 - Recommended 8 GB RAM
- Required free disk space
 - Minimum 1 GB
 - Recommended 2 GB
- Any of the following 32-bit or 64-bit Windows Operating Systems.
 - Windows Server OS: 2016, 2019 and 2022 (latest)
- Any of the following SQL Servers (local or network hosted) for storing auditing logs:
 - Any SQL Server above and including SQL Server 2016 (standard or enterprise)
- .NET Framework 4.6.2 developer pack and above

2.2 Supported Servers for Auditing

Audited Servers	Supported Versions
EMC Isilon	9.1.0.0 or above.

2.3 Supported Protocols

- UDP - User Datagram Protocol

3 EMC Isilon

3.1 Prerequisites to Audit EMC Isilon

To enable auditing, the following PuTTY commands need to be run:

```
isi audit settings global modify --protocol-auditing-enabled yes --audited-zones system --
protocol-syslog-servers 19x.xxx.xxx.xxx

isi audit settings modify --zone system --audit-success all

isi audit settings modify --zone system --audit-failure all

isi audit settings modify --zone system --syslog-audit-events all

isi audit settings modify --syslog-forwarding-enabled yes --zone system
```

3.2 Required User Rights

- EMC users must have admin permissions for accessing EMC APIs and share access permission

3.2.1 Service Rights

To run the service of Lepide after installation:

- For Auditing there is no need to be a member of the Domain Admins Group
- For running a DDC Scan you do need to be a Domain Admins Group member to enumerate Shares

3.2.2 Local System Rights

To run the service of Lepide after installation, you can select any of the following:

- A local system administrator
- A member of Domain Admins Group
- Manage Service Account object

For Auditing there is no need to be a member of Domain Admins Group but for a DDC Scan, you do need to be a Domain Admins Group member to enumerate Shares.

3.3 Add EMC Isilon

After you have installed the Solution and configured the Lepide service to run with administrative credentials, you can add an EMC Isilon File Server for auditing.

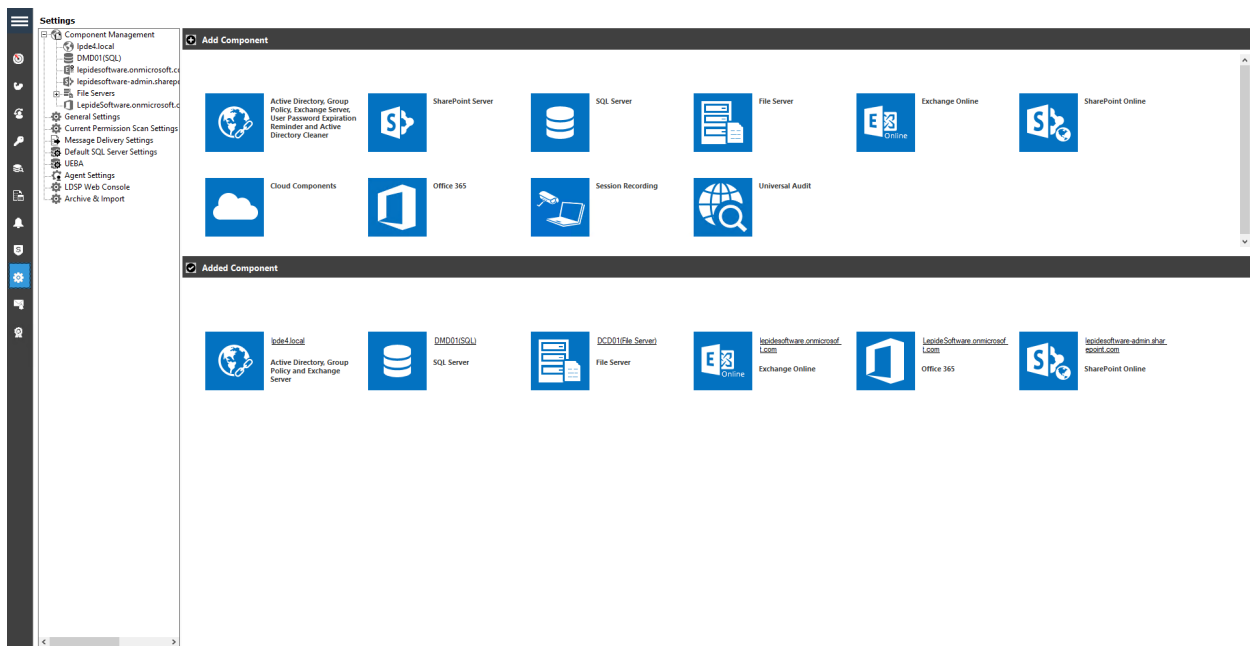


Figure 1: Component Management Window

From the Component Management window, under the **Add Component** section, click on the **File Server** icon to add this component to the solution.

The File Server Settings Console dialog box is displayed:

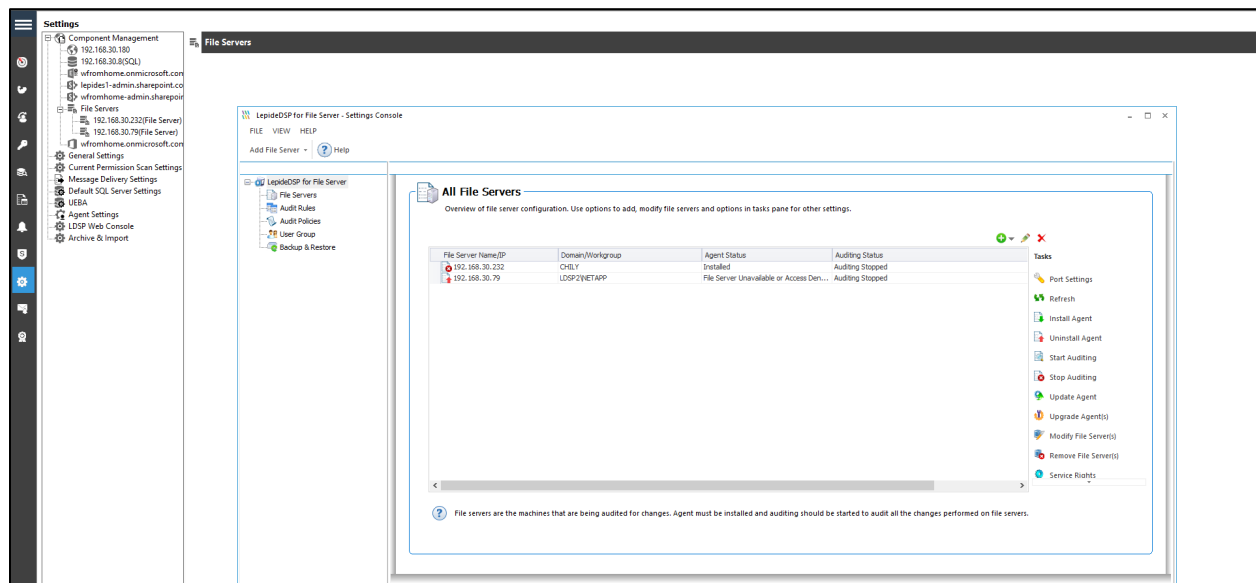



Figure 2: File Server Console

Here, you can click **Add File Server** icon  on the toolbar to add either of the following file servers:

- Windows File Server
- NetApp Filer
- EMC Isilon

1. Click the **Add File Server** icon,  select **Single** then select EMC Isilon.

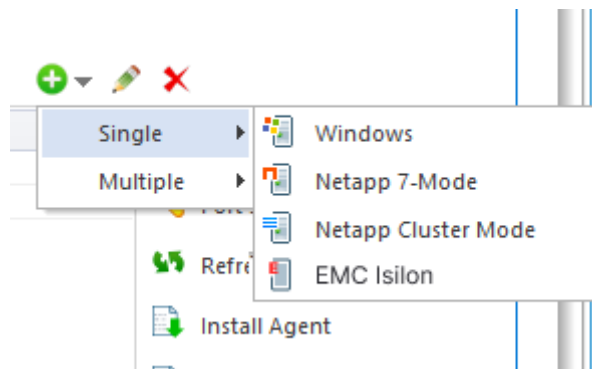


Figure 3: Option to Add EMC Isilon File Server

- 2. The **Add File Server** wizard starts:

Please Provide EMC Isilon filer information

EMC Filer Name/IP : Default Port :

Syslog Listing Port : ?

User Name :

Password :

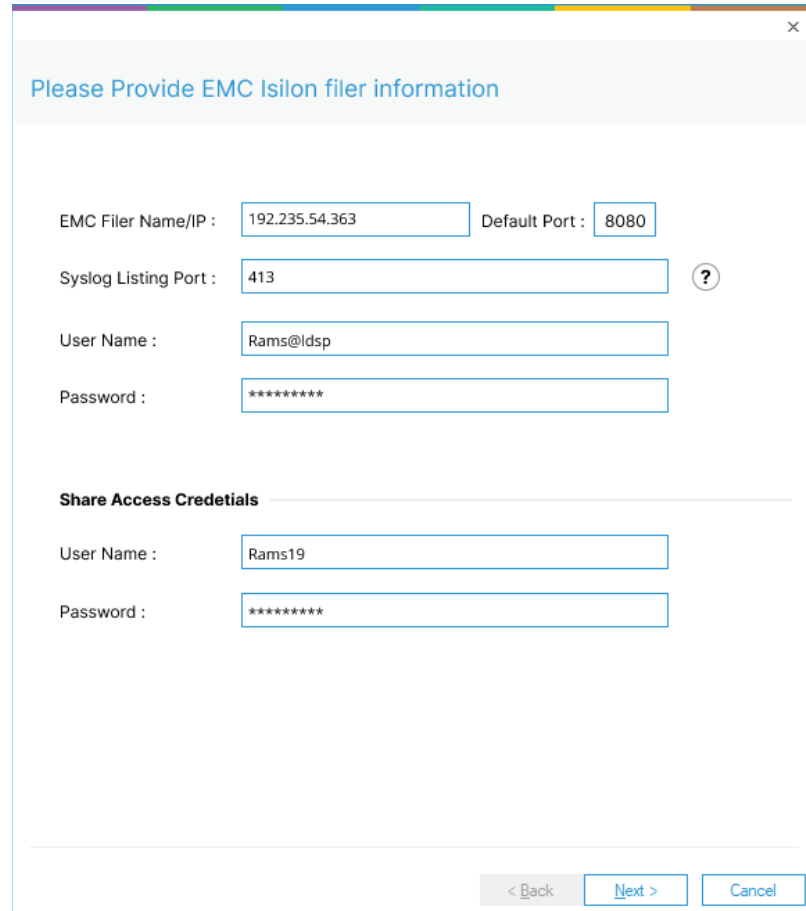
Share Access Credentials

User Name :

Password :

< Back Next > Cancel

Figure 4: EMC Isilon Filer Information




The screenshot shows a configuration window titled "Please Provide EMC Isilon file information". It contains the following fields and values:

- EMC Filer Name/IP: 192.235.54.363
- Default Port: 8080
- Syslog Listing Port: 413 (with a help icon to its right)
- User Name: Rams@ldsp
- Password: *****
- Share Access Credetials**
- User Name: Rams19
- Password: *****

At the bottom right, there are three buttons: "< Back" (disabled), "Next >" (active), and "Cancel".

Figure 6: EMC Isilon File Information Completed

3. Add all the details for the EMC Isilon file server.
 - a. The default port is 8080
 - b. Click the  icon to see information about the Syslog Listing Port
 - c. Add the User Name and Password
 - d. Add the Share Access User Name and Password
4. Click **Next** to go to the next step, to provide the details of SQL Server to create a database for storing auditing logs.

Please Provide SQL Server information

Server Name :

Windows Authentication SQL Server Authentication (Recommended)

User Name :

Password :

Note : Windows authentication credentials only applicable for insert data from file Server Directly

Database Option :

Create Database

Select Database

Note : If you do not have SQL Server installed then click this link to download SQL Express edition.
<https://www.microsoft.com/en-in/education/products/microsoft-365>

< Back

Figure 7: SQL Server Details to add EMC Isilon

5. Enter the **Server Name** or click Browse to select the desired SQL Server.
6. There are two authentication options available:
 - **Windows Authentication:** This mode can be selected if SQL Server is installed on the same computer where the solution is installed.
 - **SQL Server Authentication:** Select this mode if SQL Server is installed on a remote or local computer. We recommend that this option is selected.
 - Provide the username and password of a SQL user, who has sufficient rights to create the database.
7. Enter a database name in the database name field to create a new database. You can also select an existing database created earlier by Lepide or another application.
8. Click **Next**

The Status dialog box is displayed:

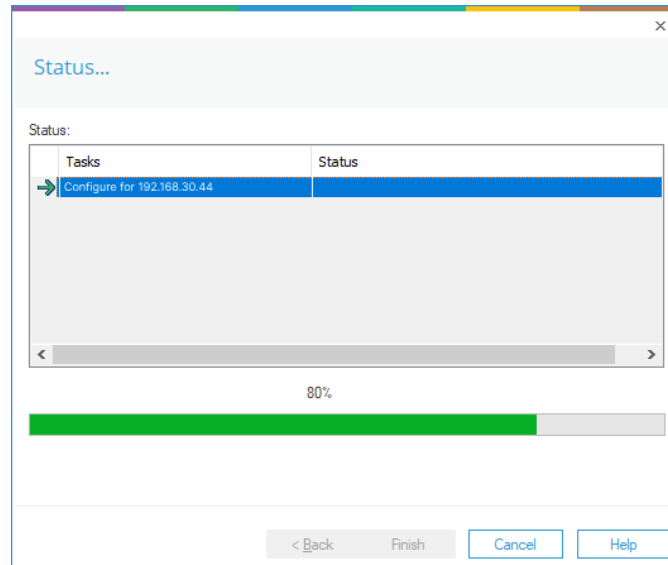


Figure 8: Status

9. Once complete, click **Finish**
10. You will return to the Settings Console and the File Server will be listed with Auditing started:

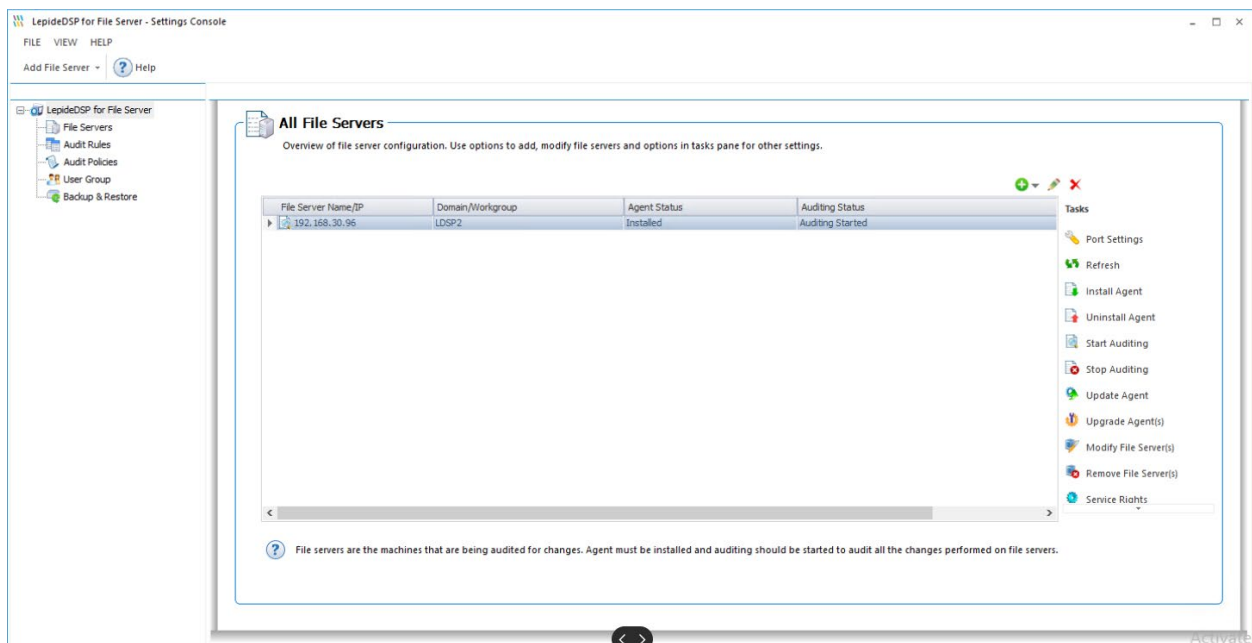


Figure 9: Settings Console with File Server Installed

3.4 Editing the EMC Isilon Credentials

To make changes to the credentials, right click on the File Server name and choose **Properties**

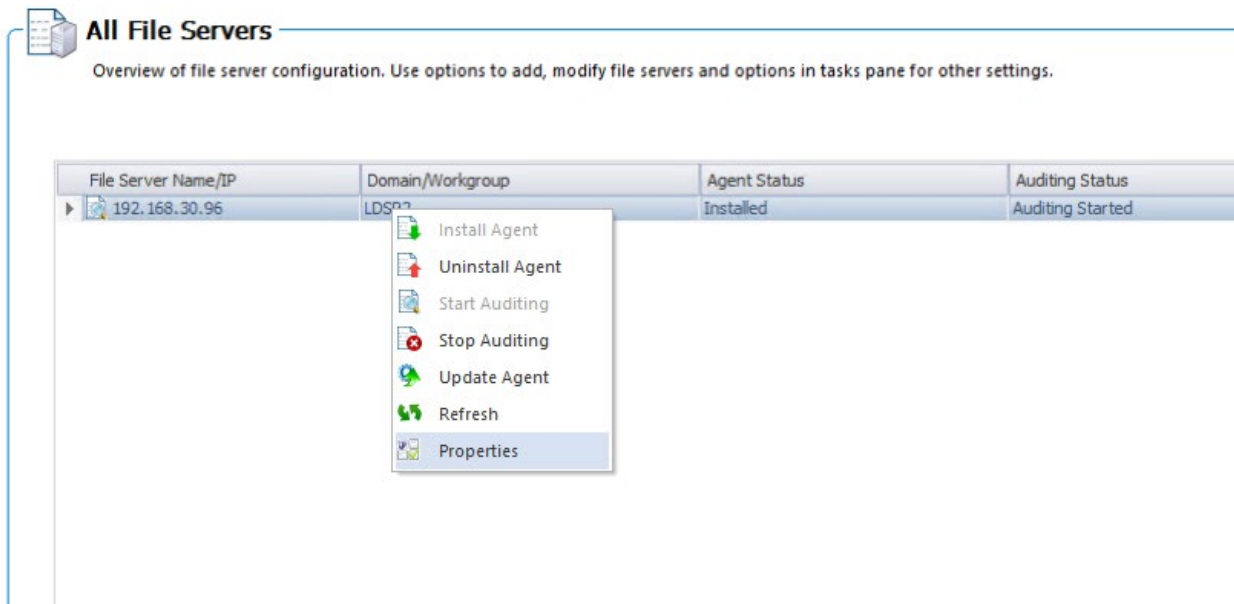
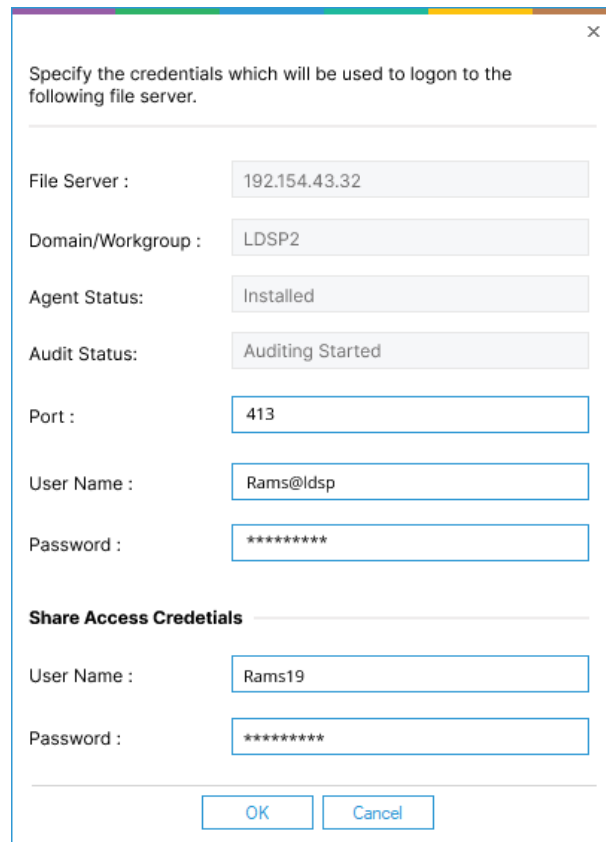


Figure 10: Properties Menu

The Properties dialog box will be displayed:



A screenshot of a Windows-style dialog box titled "Specify the credentials which will be used to logon to the following file server." The dialog box contains several input fields and buttons. The fields are: "File Server" (192.154.43.32), "Domain/Workgroup" (LDSP2), "Agent Status" (Installed), "Audit Status" (Auditing Started), "Port" (413), "User Name" (Rams@ldsp), "Password" (*****), "Share Access Credentials" (User Name: Rams19, Password: *****). At the bottom are "OK" and "Cancel" buttons.

Specify the credentials which will be used to logon to the following file server.

File Server : 192.154.43.32

Domain/Workgroup : LDSP2

Agent Status: Installed

Audit Status: Auditing Started

Port : 413

User Name : Rams@ldsp

Password : *****

Share Access Credentials

User Name : Rams19

Password : *****

OK Cancel

Figure 11: Properties

- Make changes as required and click **OK** when finished

4 Support

If you are facing any issues whilst installing, configuring, or using the solution, you can connect with our team using the contact information below.

Product Experts

USA/Canada: +1(0)-800-814-0578

UK/Europe: +44 (0) -208-099-5403

Rest of the World: +91 (0) -991-004-9028

Technical Gurus

USA/Canada: +1(0)-800-814-0578

UK/Europe: +44 (0) -208-099-5403

Rest of the World: +91(0)-991-085-4291

Alternatively, visit <https://www.lepide.com/contactus.html> to chat live with our team. You can also email your queries to the following addresses:

sales@Lepide.com

support@Lepide.com

To read more about the solution, visit <https://www.lepide.com/data-security-platform/>.

5 Trademarks

Lepide Data Security Platform, Lepide Data Security Platform App, Lepide Data Security Platform App Server, Lepide Data Security Platform (Web Console), Lepide Data Security Platform Logon/Logoff Audit Module, Lepide Data Security Platform for Active Directory, Lepide Data Security Platform for Group Policy Object, Lepide Data Security Platform for Exchange Server, Lepide Data Security Platform for SQL Server, Lepide Data Security Platform SharePoint, Lepide Object Restore Wizard, Lepide Active Directory Cleaner, Lepide User Password Expiration Reminder, and LiveFeed are registered trademarks of Lepide Software Pvt Ltd.

All other brand names, product names, logos, registered marks, service marks and trademarks (except above of Lepide Software Pvt. Ltd.) appearing in this document are the sole property of their respective owners. These are purely used for informational purposes only.

Microsoft®, Active Directory®, Group Policy Object®, Exchange Server®, Exchange Online®, SharePoint®, and SQL Server® are either registered trademarks or trademarks of Microsoft Corporation in the United States and/or other countries.

NetApp® is a trademark of NetApp, Inc., registered in the U.S. and/or other countries.